

Bolt switch contact (Strike plate contact, closing detector)

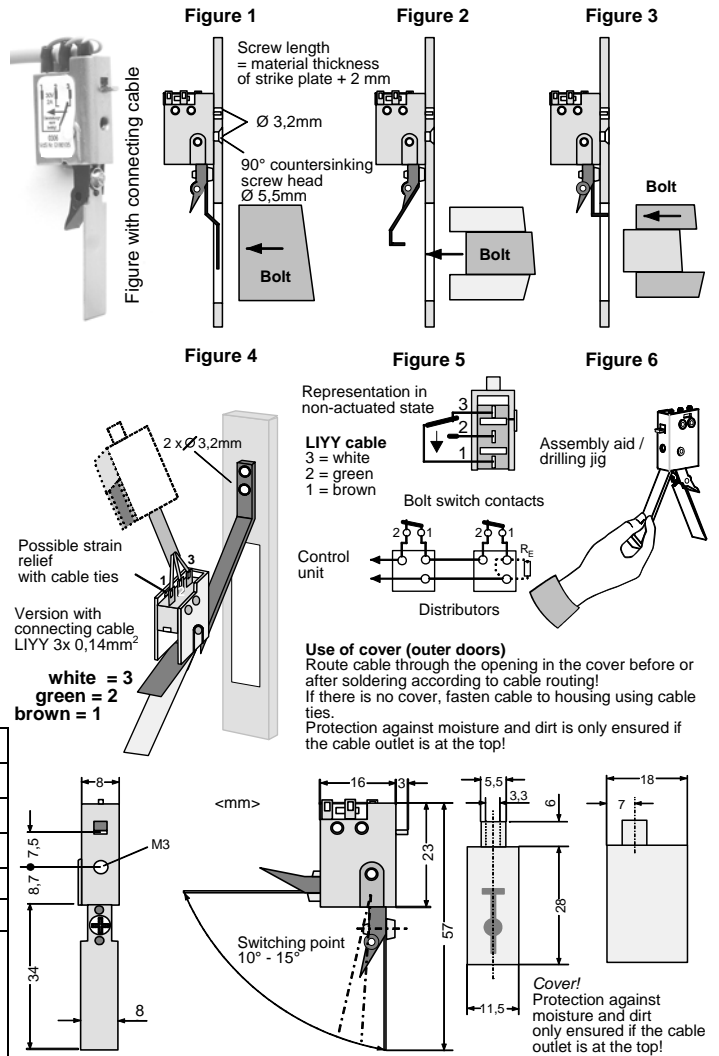
Assembly instructions

- Determine fastening position for the bolt switch contact.
- **New feature: Possibility of assembling on side of bolt blank! (Patent!)**
- Adjust lever arm as required as shown in the examples in Figure 1, 2 or Figure 3, or insert straight pin for assembling on side of bolt blank respectively.
- Glue drilling jig to the fastening site and drill 3.2 mm hole (2x). Figure 4. In the case that a cable is soldered leave drilling jig for this step.
- Depending on the application, route the connecting cable through the cover.
- If the version without connection cable is built, place bolt switch contact on the angled part of the drilling jig. Figure 4. Manufacture soldered joint in accordance with the circuit diagram. Fig. 5.
- **Micro switch housing is waterproof! IP 67!** Connections IP 50 Seal soldered connection if necessary or protect against moisture with a heat-shrinkable tube.
- Remove bolt switch contact and drilling jig.
- Create countersinking for countersunk fastening screw (M3).
- Remove adhesive strip from drilling jig.
- Place housing on jig (assembly aid). Figure 6
- Put bolt switch contact in the fastening position.
- Fasten with M3 countersunk screw provided.

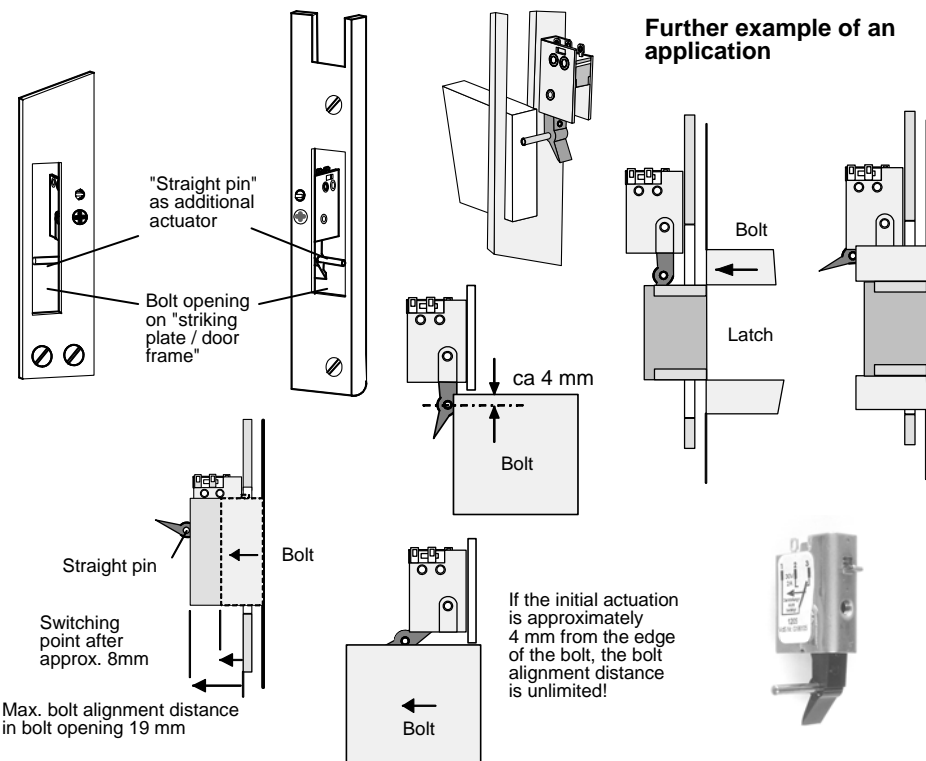
NOTE! The correct screw length is calculated from the depth of the thread of the bolt switch contact = 2 mm plus the material thickness of the strike plate!
A screw with excess length will cause a malfunction!

Technical data VdS - Nr. G 186 105 Class C

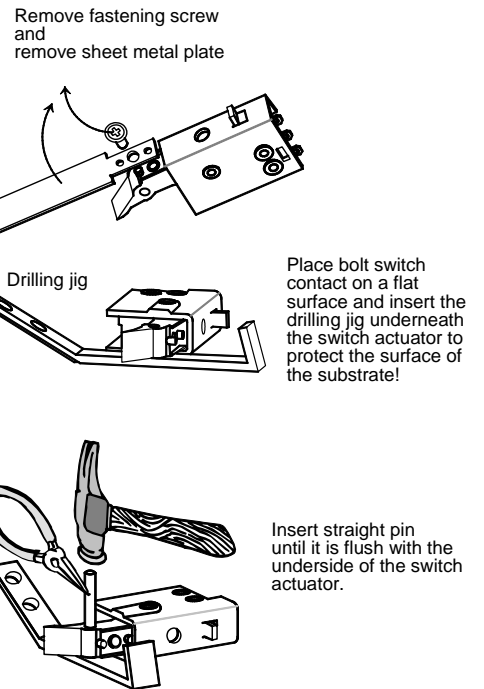
Housing, spring and lever arm	X12CrNi177 1.4310 (stainless steel)
Micro switch (changeover contact)	Gold contact 1 mA – 2 A / 30 V
Temperature range	-40 °C to +65 °C (VdS Class III)
Air humidity	Max. 95 % relative
IP rating: micro switch / connection	IP 67 / IP 50 sealed connection IP67
with cover outer doors	IP 64
Scope of delivery (Version with LIYY 3x0,14 mm ² connecting cable, grey Ø3,4mm length 2m/..... tin-coated, suitable for LSA-Pus IDC termination technology.)	Bolt switch contact; cover; drilling; jig; 1 DIN 965 countersunk screw and A2 recessed head screw (stainless steel) in each of the following sizes M3x5, M3x6, M3x8 - DIN 7m6 straight pin, 2x16 A2



NEW! Assembly on side of lock bolt blank



Inserting straight pin



Subject to changes! Date: January 2011